



• Celebrating 10 Years

# june fest

27 May - 30 June 2021

---

**Full details on [www.junefest.ie](http://www.junefest.ie)**

Activities for all the family



# EVENTS AT A GLANCE

See [www.junefest.ie](http://www.junefest.ie) for all event details.

Date	Event
27 May	Festival Launch: Online Quiz
28 May	June Fest Treasure Hunt
29 May	Online Art Exhibition
31 May	History of Newbridge: Buildings, Businesses & Architecture
31 May	Drawn by Light - Outdoor Photography Exhibition
31 May	The Grand Canal - History, Plants & Wildlife
31 May	Sensory Garden - Official Opening
-	Poetry Competition - Entries open until 30 June
01 June	Yarn Bomb in Liffey Linear Park
01 June	Audio Tour of 'The Barracks' with Frank Boland
02 June	Bands On The Bank - Online Series
04 June	Parent and Toddler Outdoor Group
04 June	Portal - A Photographic Exhibition of Bogs & Wetlands by Tina Claffey
05 June	Pilates in the Park
06 June	Small Steps - An Outdoor Miniature Art Exhibition
07 June	History of Newbridge: Buildings, Businesses & Architecture (Online Project)
08 June	An Audio tour of 'The Gibbet Rath' with Jim Kavanagh
09 June	County Kildare Military Pension Files From The Revolutionary Decade 1912-23 with Michael Keane of the Military Archives.
09 June	Bands On The Bank - Online Series
-	Newbridge Covid-19 Archive - Submissions open until 30 June
10 June	Music Network presents 10 String Symphony
10 June	'Representing the Last Moments of Irish Revolutionaries in Museums' with Dr Siobhan Doyle
11 June	The Grand Canal - History, Plants & Wildlife
11 June	Parent and Toddler Outdoor Group
12 June	Observational Storytelling with Sarah Bowie
12 June	St. Mark's Duck Race (Online)
12 June	Find a Story: An Interactive Storytime - suitable for kids 5+
12 June	Smartphone Filmmaking Workshop - suitable for ages 12 - 15 years
12 June	Harry Potter Craft Workshop - suitable for ages 7 - 10 years
12 June	A Piece of You with Greg Sinclair
13 June	Shenanigans Through Time with Paul Timoney and Kyle Riley
17 June	Launch of World War 1 Dead of County Kildare Book with talk on Ireland & World War 1 by Ronan McGreevy of the Irish Times.
19 June	Strongbow by Dr Conor Kostick
19 June	Rows and Ructions: military-civilian violence in Irish garrison towns' with Dr Aoife Bhreathnach.
19 June	Guerilla Warfare During The War of Independence with Lorcan Collins,
20 June	Mixed Football Relay with local GAA clubs on the Curragh Racecourse
24 June	Hospital Food - Online Theatre
25 June	Hospital Food - Online Theatre

*Additional events will be added to our website as restrictions ease.*

*Current events may be subject to change depending on public health advice.*

*All details will be updated on [www.junefest.ie](http://www.junefest.ie)*



## Group

June Fest  
June Fest & Newbridge Library  
PopUpArt Newbridge  
Newbridge Down Memory Lane/ Leinster Leader  
South Kildare Photography Club  
June Fest  
Newbridge Family Resource Centre  
June Fest and Farrell & Nephew  
Kildare Yarn Bombers  
June Fest  
June Fest  
Newbridge Family Resource Centre  
Riverbank Arts Centre  
Able Bodies Physiotherapy  
Kildare Art Collective  
Newbridge Down Memory Lane/ Leinster Leader  
June Fest & Kildare Derby Festival  
  
Irish Military Seminar  
  
June Fest  
Newbridge Local History Group  
Riverbank Arts Centre  
Irish Military Seminar  
June Fest  
Newbridge Family Resource Centre  
Riverbank Arts Centre  
St. Mark's School  
Newbridge Library  
Newbridge Library  
Newbridge Library  
Riverbank Arts Centre  
Riverbank Arts Centre  
  
Irish Military Seminar  
  
Irish Military Seminar  
  
Irish Military Seminar  
June Fest & Kildare Derby Festival  
Kildare Youth Theatre  
Kildare Youth Theatre

*Please comply with public health advice and stay safe.*

## Online Quiz

Thursday 27 May  
[www.junefest.ie](http://www.junefest.ie) | 8PM | Free

We will be kicking off this year's festival with our Online Quiz. Lots of prizes up for grabs, with a wide range of questions suitable for the whole family to take part in. The quiz will cover categories such as sports & movies, science & history - not to forget the ever popular Newbridge round! **Go to [www.junefest.ie](http://www.junefest.ie) to join in and enter the quiz code 715429.**

## The Grand Canal: History, Plants & Wildlife

Monday 31 May & Friday 11 June  
[www.junefest.ie](http://www.junefest.ie) | Free



This is a virtual barge trip from Sallins to Digby Bridge and back. Our aim is to give you the viewer a visual experience and allow you to travel the Grand Canal from the comfort and safety of your home.

Local historian, Paddy Behan, will cover the rich history of the canal - its construction and its contribution to industry, commerce and social life. Neil Bourke, from Birdwatch Ireland, will tell you about the fabulous wildlife along the canal, from Kingfishers to pine martens, otters, and dragonflies - and provide you with a deep insight into the beautiful

ecosystem that has developed along the canal over the years.

Once your appetite has been whetted, you can sample the delights of the canal at first hand while complying with public health advice and staying safe.

## PopUpArt

Saturday 29 May  
[www.popupartnewbridge.com](http://www.popupartnewbridge.com) | Free

Not to be defeated by Covid 19, PopUpArt Newbridge has joined forces with June Fest to launch their inventive online Gallery - [www.popupartnewbridge.com](http://www.popupartnewbridge.com) as an exciting new platform to showcase some of the amazingly talented Kildare Artists. A collaboration of 22 local artists of all genres will exhibit pieces of their work on this Gallery site from 29 May until 13 June as part of June Fest 2021. Why not check it out and enjoy this visual experience with the option to purchase an original piece of art for yourself or the art lover in your life. For Purchases please contact the Artist directly - details on Artist page. **Exhibition runs until Sunday 13 June.**





## Yarn Bomb

Tuesday 1 June  
Liffey Linear Park | Free



Take a stroll through the Linear Park and enjoy 'Bright And Beautiful',

this year's installation from the Kildare Yarn Bombers. In amongst the trees you'll find woolly flowers, butterflies, bees, giant ants and zany June Bugs. Have a seat on a knitted bench and see if you can spot four scarecrows hidden in amongst the greenery and look out for Christy Moore on his island. Walk down 'Memory Lane', created with 1,500 pom poms and made as a tribute to the Holy Family Sisters. **The project this year is raising funds for the Kildare Branch of the Alzheimer Society (details can be found on [gofund.me/b94400b3](http://gofund.me/b94400b3)).**



## Drawn by Light

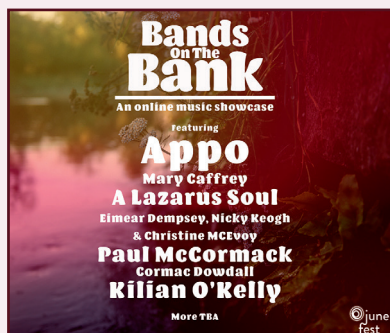
Monday 31 May  
Outdoor Exhibiton Newbridge | Free

This exhibition by members of South Kildare Photography Club has a lot of colour and variety. Many of the photos are local yet this exhibition offers the opportunity to view foreign lands. We hope that this event will encourage you to reflect and appreciate our environment. In times like these it's nice to be able to escape and dream of distant lands. 'Drawn by Light' will be on display outside Newbridge Town Hall, Riverbank Arts Centre, Bord na Móna and Bank Of Ireland until 30 June.

## Bands On The Bank

Wednesday 2 June & 9 June  
Check out [www.junefest.ie](http://www.junefest.ie) for full series

Bands On The Bank has gone online! Over the last 12 months, we have taken the opportunity to film some of Kildare's finest musicians, poets and performers. It's no gig at the Watering Gates, but it's the next best thing! This online series will feature performances from artists such as Appo, Mary Caffrey, Brian Brannigan (A Lazarus Soul), Paul McCormack, Kilian O'Kelly (Silverbacks), Laura Caffrey and a trad session with Eimear Dempsey, Nicky Keogh & Christine McEvoy. Make sure to tune in for more special guests. The premiere is on Wednesday 2 June with more episodes released throughout the festival. Keep an eye on our website for more info.





## Pilates In The Park

Saturday 5 June  
Liffey Linear Park | 10 AM

Pilates in the Park with Able Bodies Physiotherapy. This will be an introduction to Pilates - Stretching, Strengthening and Fun. We will tailor the class to the group on the day. Bring your own mat, towel and a drink. If the weather is AWFUL, we will run the class on Sunday 20th at 10am instead.

## Small Steps

Sunday 6 June  
George's Street | Free

An outdoor miniature exhibition by Kildare Art Collective. The project 'Small Steps' provides an opportunity for optimism and escape as we anticipate better times ahead. While the picture is far from certain, Kildare Art Collective are taking small steps towards June fest and our plan is to match our small steps with small scale work. The project acknowledges limitations imposed on the population but also that the longest journey starts with one step. The miniatures are an expression of the beginning of a longer walk towards better days. Artists are asked to consider what they most look forward to when restrictions are lifted. The small scale works delightfully anticipate the varied ways in which we are preparing to live and work when real life resumes. This exhibition will run until the 20 June.



## Newbridge Family Resource Centre

### The Official Opening of NFRC's Sensory Garden

Monday 31 May | 1 PM



The Sensory Garden Group was established in 2017 as a participant from the NFRC Men's Group reported he would love somewhere "quiet to relax and listen to the sound of nature". This project enabled 25 local men to forge new friendships, actively engage in the community and build this amazing Sensory Garden. It is a relaxing, all-inclusive safe space. The Sensory Garden is named after 5 geographical locations around Newbridge; The Ring of Roseberry, Milltown, Athgarvan, The Curragh and Newbridge Town Centre. To attend this virtual event, please contact [admin@newbridgefrc.ie](mailto:admin@newbridgefrc.ie) or call 045 438173 for details.

### Launch of the Parent and Toddler Outdoor Group

Friday 4 & 11 June  
9.30 AM

NFRC is delighted and excited to announce the launch of our Parent and Toddler Outdoor Group. As this event will take place outdoors please come prepared for all weather conditions from suncream to wellies! This event will run for the two Fridays of June Fest if you are interested or want more information please contact Paula on 086 1748987 or email [Paula@newbridgefrc.ie](mailto:Paula@newbridgefrc.ie).





# Treasure Hunt Worksheet

**Total Prize Fund - €750**

*4 Prizes of €100 each, 4 Prizes of €50 each & 15 prizes of €10 each*

*The Prizes will be in the form of vouchers for local businesses and are sponsored by Glenveagh Homes.*

Where necessary, the winners of individual prizes will be drawn from among those with the same score.

**Closing Date: 10.00 pm, Sunday 13 June 2021**

**A**s part of the June Fest celebrations this summer, we are teaming up with Newbridge Library for a 5km Treasure Hunt for all the family to enjoy!! This Treasure Hunt will take you on a journey around Newbridge, exploring various nature trails, landmarks and the rich history of our town.

This worksheet should be read in conjunction with the Treasure Hunt map - a copy of which may be downloaded and printed from <https://www.junefest.ie/>.

The task is to visit each of the 26 locations on the map and answer the 26 questions set out below. This may be done at any time up to 10 pm on 13 June. As well as getting some valuable exercise and fresh air, it will help you and your family to get to know some interesting details about Newbridge

Some of the answers may be obvious while others will be found on plaques close to the individual locations. These are indicated by a 'P' on the worksheet.

Once the worksheet is completed, make sure your contact details are filled in correctly, and **drop your sheet into the Newbridge Library Returns Dropbox before 10 pm on Sunday 13 June.**

**Help us to spread the word and tag June Fest in any of your photos/videos on social media using the hashtag #JuneFestTreasureHunt.** Please take care and adhere to all rules of the road and public health advice while taking part in the Treasure Hunt. We hope you have lots of fun and for more information on the festival, please go to [www.junefest.ie](http://www.junefest.ie).

*Remove this page from the booklet when submitting your answers.*

**Please provide the following contact details:**

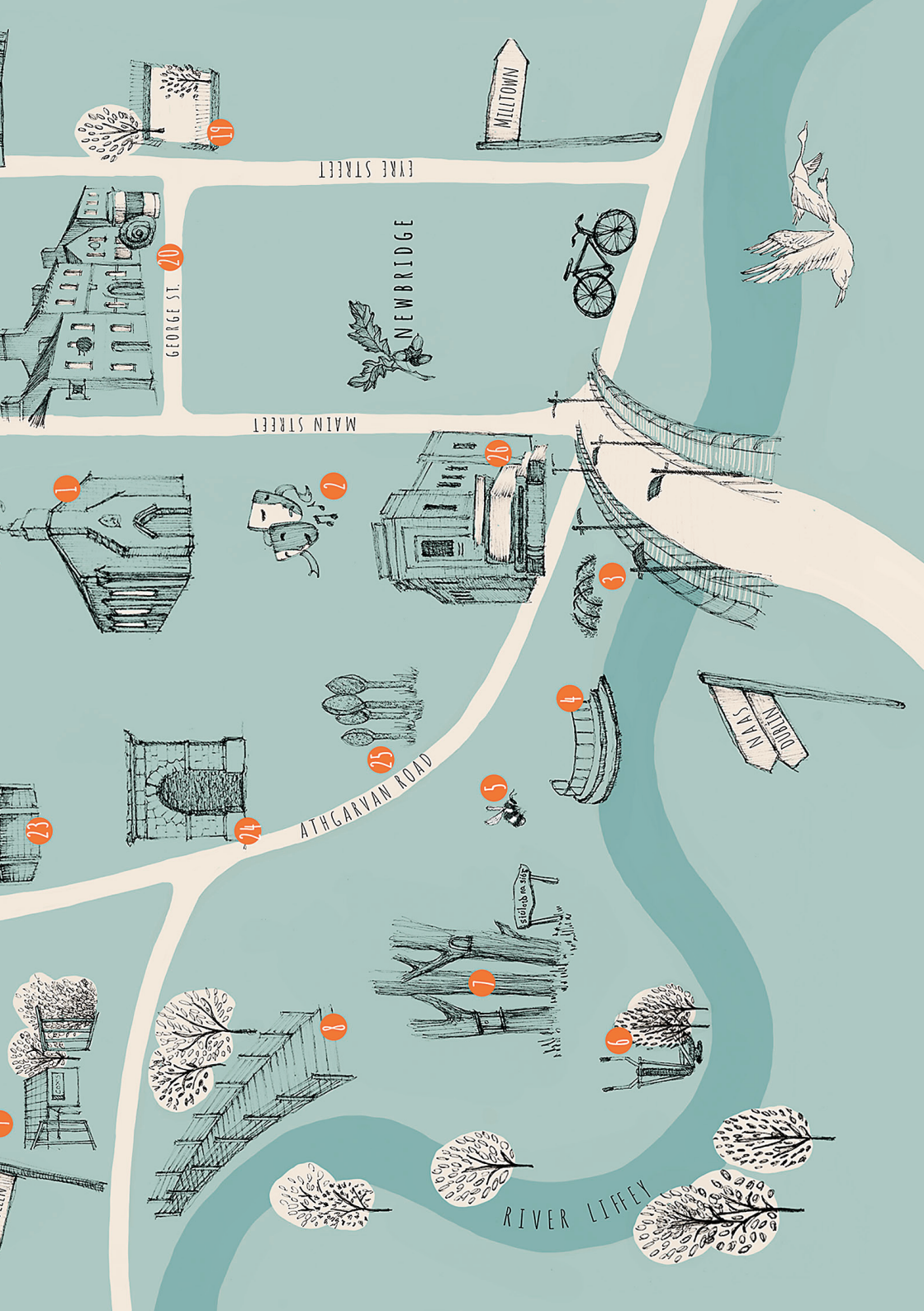
**Name:** \_\_\_\_\_ **PhoNo:** \_\_\_\_\_

**Email:** \_\_\_\_\_

☐ **Please tick this box if you would like to be added to the June Fest mailing list**







EYRE STREET

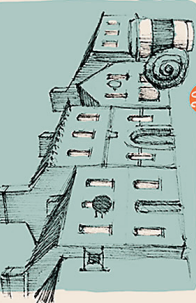
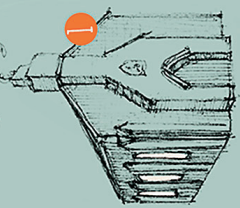
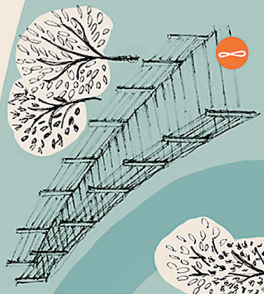
NEWBRIDGE

GEORGE ST. 20

MAIN STREET

ATHGARVAN ROAD

RIVER LIFFEY



1. Location - Start the Treasure Hunt at the Town Hall.

Q. What type of church was this building? (P)

Ans. \_ \_ \_ \_ \_

2. Location - Walk to the Riverbank Arts Centre.

Q. This building was officially opened by the Minister of what? (P)

Ans. \_ \_ \_ \_ \_

3. Location - Cross at the traffic lights and stop at the entrance to the Liffey Linear Park.

Clue. What new addition was added to the bridge? (P)

Ans. \_ \_ \_ \_ \_

4. Location - Walk through Liffey Linear Park and stop at the Watering Gates.

Q. What animal was brought here to drink? (P)

Ans. \_ \_ \_ \_ \_

5. Location - Continue walking towards the entrance to The Strand and stop before the fork in the path.

Q. What creatures live in this wooden hotel?

Ans. \_ \_ \_ \_ \_

6. Location - Next, walk towards the outdoor gym.

Q. Name the machine that swings both arms and legs?

Ans. \_ \_ \_ \_ \_

7. Location - Head over to the Fairy Walk.

Q. This fairy's house has an orange door.

Ans. \_ \_ \_ \_ \_

8. Location - Exit The Strand by the Gables but stop before the boardwalk.

Q. See if you can find the name of this walk you have just done?

Ans. \_ \_ \_ \_ \_

9. Location - Leave the Gables carpark and cross over onto Athgarvan Road. Walk back towards the town.

Q. What type of wholesaler is Cox's?

Ans. \_ \_ \_ \_ & \_ \_ \_ \_ \_

10. Location - When you get to the traffic lights walk to Newbridge Silverware.

Q. Can you name this icon, she's not local?

Ans. \_ \_ \_ \_ \_

11. Location - Next, continue walking to the Moorefield Park entrance.

Q. Name this B&B?

Ans. \_ \_ \_ \_ \_

12. Location - Walk through the green towards the Skatepark.

Q. Name the object that people skate down?

Ans. \_ \_ \_ \_ \_

13. Location - Stay in the Skatepark and look around.

Q. Who lives next door?

Ans. \_ \_ \_ \_ \_

14. Location - Leave the skatepark and cross the road through McDonalds.

Q. What is the main colour in their logo?

Ans. \_ \_ \_ \_ \_

15. Location - Continuing walking towards St. Patrick's Church.

Q. What style of architecture is this building? (P)

Ans. \_ \_ \_ \_ \_

16. Location - Walk up Old Moorefield Road and stop at the back of APPLEgreen.

Q. Name the CORE history of this house?

Ans. \_ \_ \_ \_ \_

17. Location - Next, walk up Moorefield Road towards Specsavers.

Q. Name this cafe, a place for talking and eating?

Ans. \_ \_ \_ \_ \_

18. Location - Take a left at the Bank of Ireland and stop at the corner of Station Rd & Eyre St.

Q. What is the surname of the famous scientist who lived here? (P)

Ans. \_ \_ \_ \_ \_

19. Location - Walk down Eyre St towards the Market Square.

Q. What building once stood here? (P)

Ans. \_ \_ \_ \_ \_

20. Location - Next, walk up Georges St.

Q. This building is another name for egg...

Ans. \_ \_ \_ \_ \_

21. Location - Cross the main road to Bord Na Mona

Q. How many sections were set up as part of the Experimental Station here? (P)

Ans. \_ \_ \_ \_ \_

22. Location - Walk past Penneys and take a left at Insomnia.

Q. What is the name of this road?

Ans. \_ \_ \_ \_ \_

23. Location - Keep walking towards Athgarvan Road.

Q. What landmark is located at the top of this road?

Ans. \_ \_ \_ \_ \_

24. Location - Turn left on Athgarvan Rd and walk to the Old Barrack Gate.

Q. What is one of the few remaining features of the original barracks? (P)

Ans. \_ \_ \_ \_ \_

25. Location - Continue down Athgarvan Rd and stop at the green by Liffey Terrace.

Q. What is the name of these mosaic sculptures? (P)

Ans. \_ \_ \_ \_ \_

26. Location - Walk to the traffic lights and stop at the old library headquarters on Athgarvan Rd/Main Street.

Q. What was the name of the first county librarian? (P)

Ans. \_ \_ \_ \_ \_





## The Barracks

### - Audio Tour

Available Online  
[www.junefest.ie](http://www.junefest.ie) | Free

Local historian, Frank Boland, takes us on an audio tour of the housing estate known as the Barracks. It is loosely based on Frank's book - 'From the Barrack Gate to the Watering Gates', about the history of the houses in the estate and its residents. The 'tour' begins on the Main St., at the Barrack Gate, between the Town Hall and the Garda Station, and then goes through the estate, down to the watering gates, finishing on the Main St. beside the Riverbank Arts Centre. This recording is designed to be listened to in the comfort and safety of your own home. Perhaps you may want to take the same journey and follow in Frank's footsteps as he guides you through the history of the Barracks housing estate.

## Newbridge Covid-19

### Archive

Submissions Opened  
[www.junefest.ie](http://www.junefest.ie) | Free

As we cautiously emerge from Lockdown, Newbridge Local History Group, as part of June Fest 2021, invites you to tell us your Covid story from your perspective and how it impacted on health, family, work, education, sport, business, relationships and so on. The intention is to create a permanent archive of what it was like to live in Newbridge during the pandemic. This archive will be permanently available on our website: [www.newbridgehistory.org](http://www.newbridgehistory.org). While there will be prizes for the three best submissions, **we welcome contributions from people of all ages with a story to tell.** See [www.junefest.ie](http://www.junefest.ie) for full competition details.

**Prizes for best submissions: 1st (€200), 2nd (€100) & 3rd (€50)** in the form of vouchers for local businesses are **sponsored by Glenveagh Homes.** Closing date 30 June.

## St Mark's Duck Race

Saturday 12 June  
[www.junefest.ie](http://www.junefest.ie)  
 Online | Free

St. Marks Duck race will commence with over 2,000 ducks all set to sail. This years event will be livestreamed due to health and safety restrictions. To sponsor a duck and to see all event updates, go to [www.junefest.ie](http://www.junefest.ie). All money raised will go towards the development of St. Mark's School.



## Poetry Competition

Submissions Opened  
[www.junefest.ie](http://www.junefest.ie) | Free

June Fest and Farrell & Nephew bookstore are partnering this summer to host the 'June Fest Poetry Competition'. Poets (young and not so young) are invited to submit original poems. Following shortlisting, the prize-winning **poems will be judged by the internationally renowned poet and broadcaster, Theo Dorgan.** While poems may be on any topic, this may be an opportunity to poetically reflect on the impact of Covid on our world. Arrangements for the competition can be viewed at [www.junefest.ie](http://www.junefest.ie). **Closing date 30 June.**

**Open Prizes: 1st (€300), 2nd (€200) & 3rd (€100)** as vouchers for local businesses **sponsored by Glenveagh Homes.**

Special prizes for under 18s – €100, €50 & €30 – 1st Prize sponsored by Farrell & Nephew.

# Irish Military Seminar 2021

The 5th Irish Military Seminar will again be taking place this June. The events will take place online, in accordance with public health guidelines in place for indoor events. The format will be a combination of live Zoom events and pre-recorded videos.

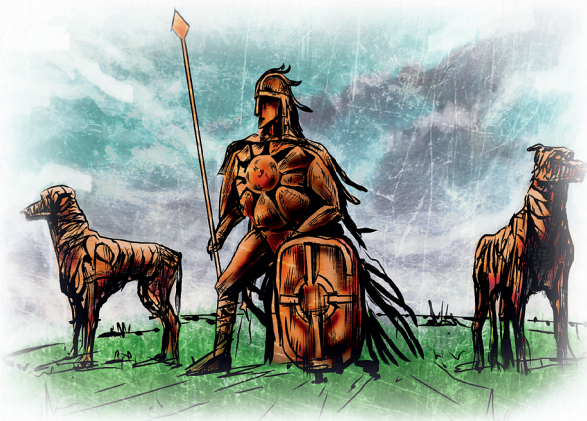
Bookings will open for these FREE events in May. To book a ticket please email [localhistory@kildarecoco.ie](mailto:localhistory@kildarecoco.ie) for further information. Dates and times may be subject to change.

*The highlights include:*

- Tuesday 8 June – 7.30 PM. **County Kildare Military Pension Files From The Revolutionary Decade 1912-23** by Michael Keane of the Military Archives.
- Thursday 10 June – 7.30 PM. **‘Representing the Last Moments of Irish Revolutionaries in Museums’** by Dr Siobhan Doyle (National Museum of Ireland).
- Thursday 17 June – 7.30 PM. **Launch of World War 1 Dead of County Kildare Book** with talk on Ireland & World War 1 by Ronan McGreevy of the Irish Times.
- Saturday 19 June – 10 AM. **Strongbow** by Dr Conor Kostick.
- Saturday 19 June – 11 AM. **Rows and Ructions: military-civilian violence in Irish garrison towns’** by Dr Aoife Bhreathnach.
- Saturday 19 June – 12 pm. **Guerilla Warfare During The War of Independence** by Lorcan Collins - Author, Tour Guide & Podcast Host.

A number of pre-recorded events will also be released as part of the Military Seminar Programme. These include ‘History Shorts’ with Raphael Ryan of Newbridge Local History Group on World War 2 cartoonist Bill Maudlin, an interview with Kildangan historian Dr. Barbara Walsh on Irish Women during World War 1 and a talk on military veterans content including oral history project, organized by the Military Archives.

Keep an eye on [www.kildare.ie/ehistory](http://www.kildare.ie/ehistory), the **Kildare Decade of Commemorations Facebook Page**, [@cilldara2016](https://twitter.com/cilldara2016) Twitter account and in the local media for further details.



Bookings will open for all of these free events in May. Dates and times may be subject to change.

Email [localhistory@kildarecoco.ie](mailto:localhistory@kildarecoco.ie) for further details and to book in.

The Irish Military Seminar is supported by June Fest, Kildare Decade of Commemorations, Riverbank Arts Centre and the Department of Tourism, Culture, Arts, Gaeltacht, Sport and Media under the Decade of Centenaries initiative.

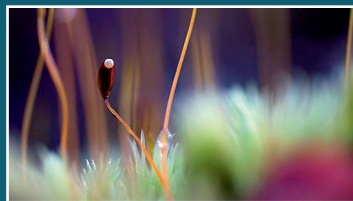


# Riverbank Arts Centre

## Portal - an exhibition by Tina Claffey

Friday 4 June  
[www.riverbank.ie](http://www.riverbank.ie) | Free

Tina Claffey loves to get 'lost' in the bogs, eskers and wetlands of Ireland with her macro lens. This solo show takes the viewer through a portal to other wondrous worlds that co-exist with us. Lichens become enchanted forests, mystical goblets appear that are fit for otherworldly kings and queens. This beguiling photography exhibition will allow you to immerse yourself in ancient watery worlds that defy your sense of reality, while appreciating this ancient Irish wilderness you are exploring.



Tina Claffey is an award-winning nature photographer who has exhibited in the US, Botswana, Zambia and throughout Ireland. Her book 'Tapestry of Light - Ireland's bogs & wetlands as never seen before' was published in October 2017.

## Music Network presents: 10 String Symphony

Thursday 10 June  
[www.riverbank.ie](http://www.riverbank.ie) | 8 PM | €10/20

Described as "The newest and most promising voices in Americana" by NPR, 10 String Symphony is a collaboration between Grammy-nominated fiddle player Christian Sedelmyer and acclaimed songwriter and multi-instrumentalist Rachel Baiman. Take ten strings, add two compelling voices and one shared sense of social justice, and what you've got is a dynamic duo in the best tradition of Guthrie and Seeger. Christian Sedelmyer and Rachel Baiman are artists firmly rooted in the old-timey Americana tradition, but with musical explorations that carry them fearlessly into the present moment. They are champions of change, and though just two in number, their impact is massively amplified by their brilliant use of technology and skilful arrangements. These are truly musicians of our time.

## Observational Storytelling with Sarah Bowie

Saturday 12 June  
[www.riverbank.ie](http://www.riverbank.ie) | 12 PM | Free



In this online tutorial with writer & cartoonist Sarah Bowie, Sarah will show how to take ordinary, everyday life and turn it into material for compelling storytelling! Sarah will explore different ways of observing – observing ourselves (our moods, thoughts, activities and conversations); observing others (family members, neighbours, strangers, wildlife and pets), and observing our environment (our homes, our local park, the supermarket, the weather); looking at how to edit these observations and mould them into shape, as complete short stories in themselves, or springboards for longer fiction pieces. Suitable for 12 years+.

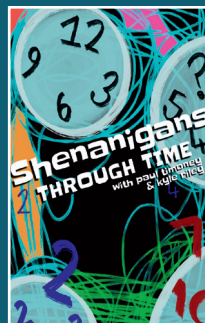
About Sarah Bowie: Sarah Bowie is a writer and cartoonist. Her 'Socially Distanced' comic strip, an observational look at life in a pandemic, updates weekly on Instagram at @sarah\_\_bowie.

## Shenanigans Through Time

with Paul Timoney & Kyle Riley

Sunday 13 June  
[www.riverbank.ie](http://www.riverbank.ie) | 11 AM | €10

Pirates... Dinosaurs... This can only mean one thing- 'Shenanigans Through Time' - some madcap musical time travel via ZOOM with Paul Timoney & Kyle Riley! There'll be songs of the sea and shanties, me hearties, ballads of Dino extinction and more. In 'The Pair of Normal Pirates' something sends their ship hurtling through time. They've sailed the seven seas, but will they ever get home? And then... Where does a Stegosaur leave his new 4x4? At the 'Jurassic Car Park', of course! If there's cars and dinosaurs in the same story, that must mean more trouble with time. And here's your 'more'... Get your arts and craft supplies ready so you can make your very own dinosaur. Suitable for the whole family, perfect for 5-11 year olds. Duration 60 mins approx.





## A Piece of You with Greg Sinclair

Saturday 12 June  
www.riverbank.ie | €10

Imagine telling a story about yourself and then having it turned into a piece of music. A Piece of You is an intimate performance for you in your home; a private concert for you alone or with your family via ZOOM. Award-winning performance artist, cellist and composer Greg Sinclair turns your thoughts and feelings into your very own music score in this unique piece all about you.

For audiences of up to 3 people. Please see riverbank.ie for available time slots.

Duration 30 minutes.

## Newbridge Library Cruinniú na nÓg & Summer Stars Fun Day

Events throughout the day –  
Saturday 12 June | Free



Newbridge Library will be celebrating Cruinniú na nÓg and the start of the Summer Stars children's reading challenge with fun online workshops for all ages. The Summer Stars reading challenge is a free national reading programme for children, taking place in all public libraries and online from 12 June until the end of August. Children receive rewards and incentives along the way followed by a medal and certificate at the end of the summer. **For more information please contact the library. Email [newbridgelib@kildarecoco.ie](mailto:newbridgelib@kildarecoco.ie) to book a place.**

### 9:45 am - Find a Story: An Interactive Storytime

Suitable for kids 5+ - family participation encouraged

Can you solve the clues, sing the songs, find some objects in your home and help Sarah create a unique story before the time runs out?

### 11:00 am - Smartphone Filmmaking for Teenagers with Burning House Productions

Suitable for ages 12-15 years

Learn how to write, film and direct your own film. Topics covered include: scriptwriting, directing, cinematography, smart-phone filmmaking and editing.

### 2:00 pm - Harry Potter Craft Workshop

Suitable for ages 7-10 years

In this workshop you will learn how to make magical crafts – from Harry Potter themed bunting to 'house-sorting origami'. There we also be some mindfulness exercises during the workshop.

Free – email [newbridgelib@kildarecoco.ie](mailto:newbridgelib@kildarecoco.ie) to book a place.



# Kildare Youth Theatre

## Hospital Food

Thursday 24 & Friday 25 June

Director: Marco Mazza | Assistant director: Berta Sipos | [www.kildareyouththeatre.com](http://www.kildareyouththeatre.com) | 7PM | €5

Set in the present day, Hospital Food follows ten teenagers from the ages 14 to 18 who are the residents of a teenage cancer unit in a city hospital. All of them (a mix of boys and girls) are undergoing various conventional treatments for different cancers at different stages of progression. Their shared illness bonds them and they support each other as they reveal their fears and hopes for the future while confronting, head on, the very real prospects of an untimely death. Hospital Food is a play about friendship and it's the celebration of the highest value of life: life itself. The play is performed by the young members of Kildare Youth Theatre.

Check out more shows by Kildare Youth Theatre including 'Chatroom' & 'Boy with a Suitcase' on their website - [www.kildareyouththeatre.com](http://www.kildareyouththeatre.com)

# KILDARE DERBY FESTIVAL

## more than the race

This year we will be teaming up with the Kildare Derby Festival to pass on the festival torch from Newbridge, across the Curragh Plains, to our friends in Kildare Town. Keep an eye out for collaborations with June Fest, with lots of fun activities for the whole family. The Curragh Ramble: Audio Tour of The Gibbeth Rath with Jim Kavanagh, Relay Race with Local GAA Clubs and much more.

**Kildare Derby Festival takes place Sunday 20th June - 27th June.**

Please see <https://intokildare.ie/kildare-derby-festival> for all festival details.

**Best of luck to Kildare Derby Festival from June Fest**





Full details on [www.junefest.ie](http://www.junefest.ie)  
Activities for all the family



Supported by



Map & Illustrations by Gráinne Bath Enright  
Print & Design by Johnswood Press Ltd

Cover Image by Martin Connolly  
Cover Design by Stephen Connolly